


EverFi

Critical Skills for 21st Century Learners

Maddy Murphy - Director, K-12 Programs

Brett Elwell - Schools Manager, Maine & New Hampshire

A young girl with dark hair tied back is sitting at a wooden desk in a classroom, smiling at the camera while her hands are on a laptop keyboard. The background is slightly blurred, showing other students and classroom posters. A vertical orange bar is positioned to the left of the text.

EverFi partners with institutions to deliver a high quality 21st Century skills learning platform to schools and communities at no cost to better prepare students for next generation challenges.

About EverFi

EverFi teaches and assesses students in the critical skills they need for life. Our cutting-edge digital curriculum is available at no cost to K12 schools and districts.



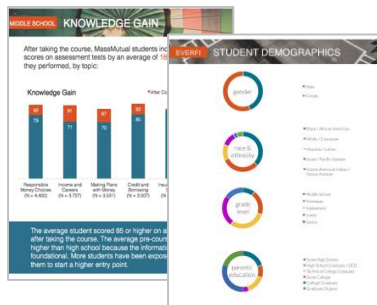
EverFi Nationwide: Over one million students using EverFi Financial Literacy courses

Measuring Impact

The following data is available with district-wide student participation:



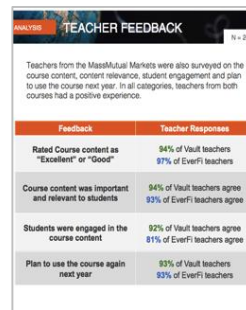
Student Assessment Data



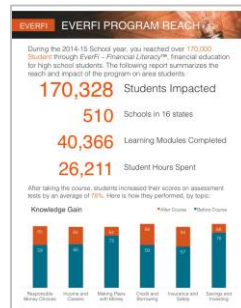
Attitudinal Surveys



Teacher/Student Feedback



Program Reach & Efficacy



Knowledge Gains • Readiness • Behavior Change • Satisfaction • Modules Completed • Hours Spent Learning

A large, diverse crowd of people, mostly young adults, are shown from the chest up, filling the frame. They are all smiling and cheering, with many raising their right fists in a celebratory gesture. They are holding up numerous white certificates with green borders. The certificates have the text "Financial Literacy" and a small yellow seal. The background is a plain, light-colored wall. The overall atmosphere is one of joy and achievement.

SPONSORSHIP SERVICES

EVERFI

Supporting Public-Private Partnerships

500+ Corporations



neustar

Walmart



Comcast

Morgan Stanley

DISCOVER



usbank



Foundations



From One Hand To
AnOTHER



800+ Higher Ed Institutions



Services Include:

Curriculum is Available at No Cost

Including annual updates and improvements

Free Professional Development

Including ongoing support

Real-time Data on Student Progress

And unlimited student licenses



K-12 Learning Courses

	FINANCIAL LITERACY	STEM	DIVERSITY & INCLUSION	CAREER SUCCESS	HEALTH & WELLNESS
Elementary	Vault <i>Understanding Money</i> 4-6th Grade	Future Goals <i>Hockey Scholar</i> 4-7th Grade			
Middle	FutureSmart 6-8th Grade	Ignition <i>Digital Citizenship</i> 6-9th Grade	Commons <i>Digital Town Square</i> 8-10th Grade	Venture <i>Entrepreneurial Expedition</i> 7-10th Grade	Healthy Relationships 7-9th Grade
High	EverFi <i>Financial Literacy</i> 9-12th Grade	Radius <i>STEM Readiness</i> 8-11th Grade	306 <i>African-American History</i> 9-12th Grade		



Standards Aligned



Student Assessments



Digital Badging



Easily Scalable

EVERFI

Past and Current Progress

Past Usage

- High school: 531 students in 19 schools
- Middle School:
- Elementary School: 149 students in 8 schools
- Total: 680 students in 27 schools

. Current Usage

- High School: 2,400 Students Active in 55 schools
- Middle School: 1500 students in 25 schools
- Elementary School: 335 students in 9 schools
- Total: 4,210 students in 89 schools

Standards Alignment

- EverFi Financial Literacy Standards Alignment:
 - National Jump\$tart Standards for Financial Education
 - Common Core Standards for ELA, Math
 - State Academic Standards, Reading, Social Studies

- EverFi FutureSmart Standards Alignment:
 - National Jump\$tart Standards for Financial Education
 - Common Core Standards for ELA, Math
 - State Academic Standards, Reading, Social Studies, and Career Development

- EverFi Vault Standards Alignment:
 - National Jump\$tart Standards for Financial Education
 - Common Core Standards for ELA, Math
 - State Academic Standards, Social Studies



Grade/Course Placement

- EverFi Financial Literacy (High School):

- JMG
- Economics
- Math
- CTE

- FutureSmart (Middle School):

- Social Studies
- Economics
- Math
- Grade-specific advisory

- Vault (Elementary School):

- Social Studies
- Math
- Centers

EverFi

Financial Literacy™ For High School



Highlights

- 9 modules, 45 minutes each
- Typically placed in Economics, Business or CTE classes
- Real-life guided practice simulations, like filling out the FAFSA or 1040-EZ forms
- Ability to share budgeting & higher education information with parents

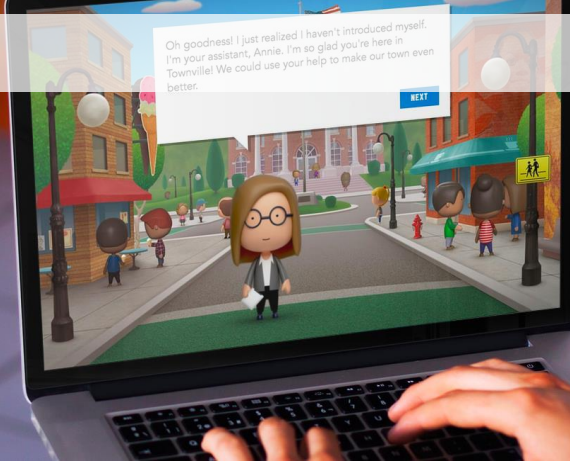
Topic Areas

- Saving
- Banking
- Payment Types
- Credit Score
- Financing Higher Education
- Renting vs. Owning
- Taxes and Insurance
- Consumer Protection
- Investing



Grade Level: 9th - 12th
Course Length: 6 - 8 hours

Aligns with state and national Jump\$tart and Common Core standards



Highlights

- **7 modules, 30 minutes each**
- **Typically placed in Economics, Business or Social Studies classes**
- **Simulation-based learning embedded with real-world decisions**
- **Companion mobile app to reinforce positive financial behaviors**

Topic Areas

- Financial Values & Goal-Setting
- Budgeting and Opportunity Costs
- Saving and Investing
- Payment Types
- Banking
- Risk vs. Return
- Planning for the Future



Grade Level: 6th - 8th

Course Length: 3 – 3.5 hours

Aligns with Jump\$tart, NCSS, and State Academic Standards

Vault

Understanding Money™ for Grade School



Highlights

- 6 modules, 30 minutes each
- Typically placed in Math, Social Studies or Technology class
- Embedded, performance-based games
- Personalized offline goal-setting activities
- Supplemental lesson plans for teachers

Topics Areas

- Savings Plans
- Setting Financial Goals
- Taxes
- Income
- Budgeting
- Credit vs. Cash
- Managing Risk
- Investing
- Borrowing
- Needs & Wants



Grade Level: 4th - 6th

Course Length: 2.5 hours

Aligns with state and national Jump\$tart standards



FUTURE GOALS™

POWERED BY EVERFI

Hockey Scholar™



Highlights

12 modules, 20 minutes each

Typically placed in Math and Science classes

Utilizes game of hockey to explore real-life STEM concepts

Each module structured to reinforce Scientific Method

Bonus STEM Career video content

Topic Areas

- Experimental Variables
- Data & Graphical Analysis
- Calculating Area
- Kinetic & Potential Energy
- Phases of Matter
- Types of Forces
- Body Systems
- Distance vs. Time
- Geometric Constructions
- Coordinate Planes



Grade Level: 4th - 7th

Course Length: 3 - 5 hours

Aligns with State & Provincial Math/Science standards, NGSS, & CCSS Math

Ignition

Digital Literacy & Responsibility™



Highlights

7 modules, 30-45 minutes each

Typically placed in Computer/Technology classes

Nuts and bolts of how technology works

Virtual environments and simulations to tackle

Digital Citizenship issues

Interactive *My Digital Life* capstone game

Topic Areas

- Digital Footprint
- Internet Safety
- Cyberbullying
- Conducting Online Research
- Digital Time Management
- STEM Careers

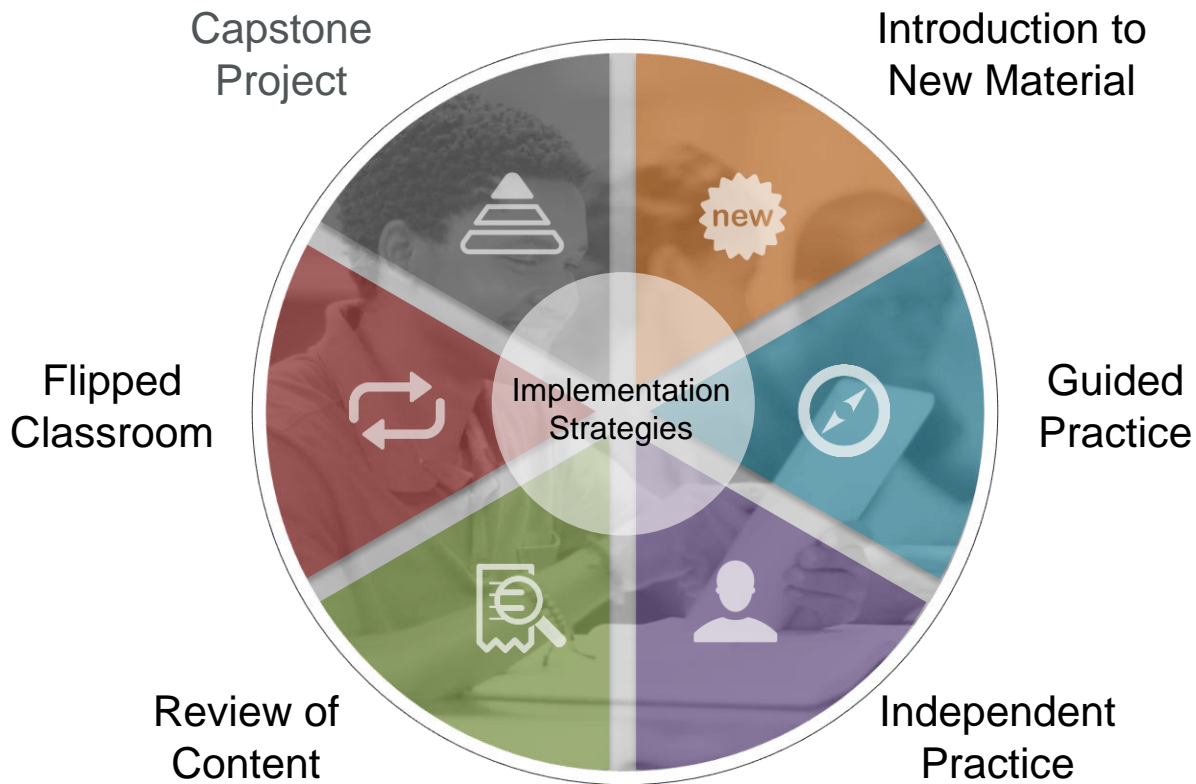


Grade Level: 6th - 9th

Course Length: 3-4 hours

Aligns with State and ISTE Standards and fulfills CIPA objectives

Implementation Strategies



Next Steps & Support



Contact me with any questions or referrals:

Brett Elwell

Schools Manager, Maine & New Hampshire

belwell@everfi.com

(505) 321-1029



Quick Start Guide

› Register Your Instructor Account

- Go to www.everfi.com/register
- Click **Teacher** and enter your **state**.
- Search for your school name. Then click **Next** (Can't find it? Click "**Can't find your school?**")
- Complete your profile and select your desired course from the dropdown menu.
- Agree to the **Terms of Service**, click **Next**, and you'll see the EverFi Dashboard!

› Set Up Classes/Student Registration Codes

- Find the course you want to use and click **Add Class**.
- Enter the class name (e.g. Period 1 – Grade 8) and all additional information.
- A class registration code will automatically generate, save under **Classes & Codes**, and be emailed to you. You'll need this code for the next step.
- Repeat this for all of your classes.

› Help Students Self Register

- Students visit www.everfi.com/login and click **Student/Learner**.
- Students enter class registration code you created and click **Next**.
 - Student usernames must be unique.
 - Student email addresses are NOT required.
- Click **Finished**, and get started!
- Students can enroll in multiple courses by entering additional codes in the **Add a Course** box on the upper right corner of their dashboards and clicking **Save**.

If you have questions, please contact your local Schools Manager:

Brett Elwell
belwell@everfi.com
(505) 321-1029

EVERFI



Maine Financial Scholars Program

The Maine Financial Scholars Program builds the foundation for students' future financial well being. Covering everything from common account types to the basics of investing, each module provides bite-sized, instructional animations to make each topic approachable and relatable to students.

In the program, students are immersed in real-life financial scenarios and documentation. Complicated processes – like buying a car or filling out the FAFSA form – are broken down for the student in an easy-to-understand way.

Recommended Grade Level: 9-12

Total Modules: 9 (40-50 minutes each)

Total Time: 6-8 hours

Subject Fit: Economics, Business, CTE

Standards Alignment: Jump\$tart Standards, U.S. State Financial Literacy Standards

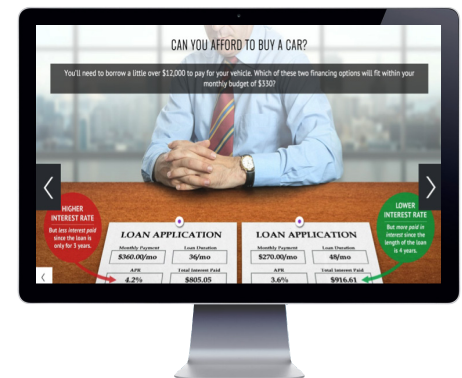
Key Highlights

As a teacher, you receive:

- Real-time student score reports on your teacher dashboard
- Supplemental, offline lesson plans
- Detailed standards alignment guide with your state-specific standards
- Answer Keys for all assessments
- Engaging discussion guides

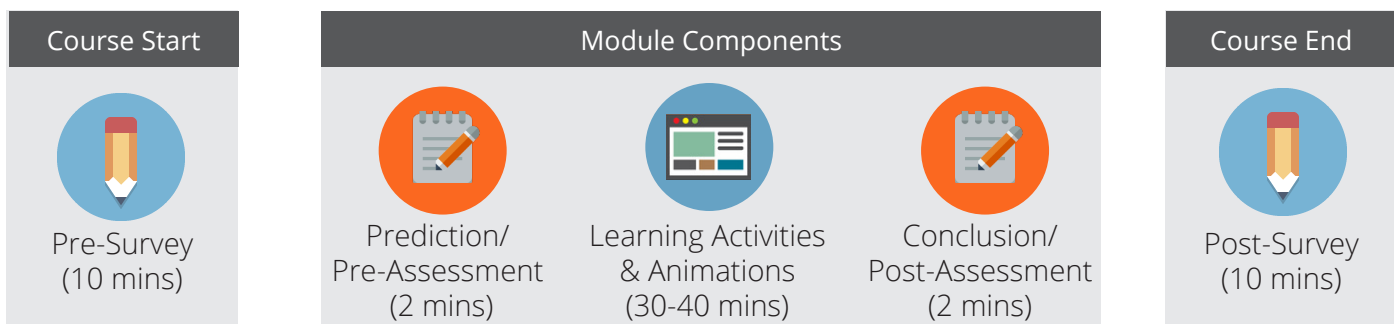
Your students will receive:

- Engaging animations providing explicit direct instruction on new topics
- Guided practice activities that reinforce financial knowledge and skills
- Engaging, performance-based games
- Immersive, interactive learning experience



Evaluate Which Car Loan Fits In Your Budget

Course Flow



Course Elements

Pedagogy based on the **Universal Design for Learning (UDL)** and **Teach for Understanding (TFU)** frameworks:



Engaging multi-media content for all types of learners



Pre, post, and formative assessments for evidence-based learning



Certificate-based skill development

Select Course Modules

Filling Out the FAFSA Form - Students learn first-hand how easy filling out the FAFSA form can be. In this activity, students go through the form step-by-step, answering questions on how to fill out certain sections, where to apply online, and where to go for help if they get stuck.

Understanding Your Paystub - You just got your first paycheck, but wait...that number can't be right. In this activity, students practice how to read the components of their paystub, including the effect of taxes and deductions on net pay.

Can You Afford To Buy A Car? - That brand new sports car may be calling your name, but there are a lot of things to consider before buying your first car. Students pick a car to buy, and see whether it will push their budget to the limit.



Exploring The Components Of A Paystub

Questions: Contact Brett Elwell
belwell@everfi.com
(503) 321-1029

The Maine Attorney General's sponsorship of Maine high schools ensures that teachers and students have access to this innovative program at NO COST to schools or taxpayers.

Brett Elwell
Schools Manager
332 Congress St. Suite 300
Boston, MA 02210
P: (505) 321-1029
belwell@everfi.com
www.everfi.com

Course Module Topic Areas:

- Saving
- Banking
- Payment Types
- Credit Scores
- Higher Education
- Renting vs. Owning
- Insurance & Taxes
- Consumer Protection
- Investing